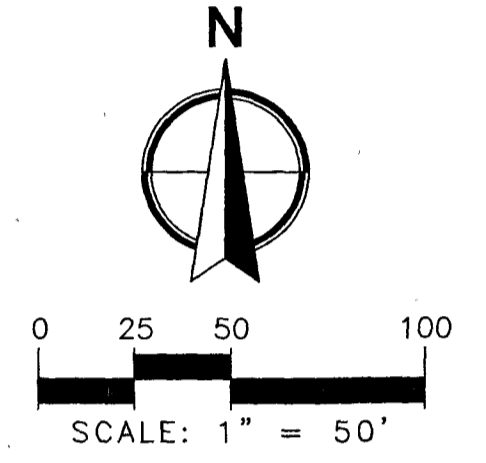


WATERFORD REPLAT

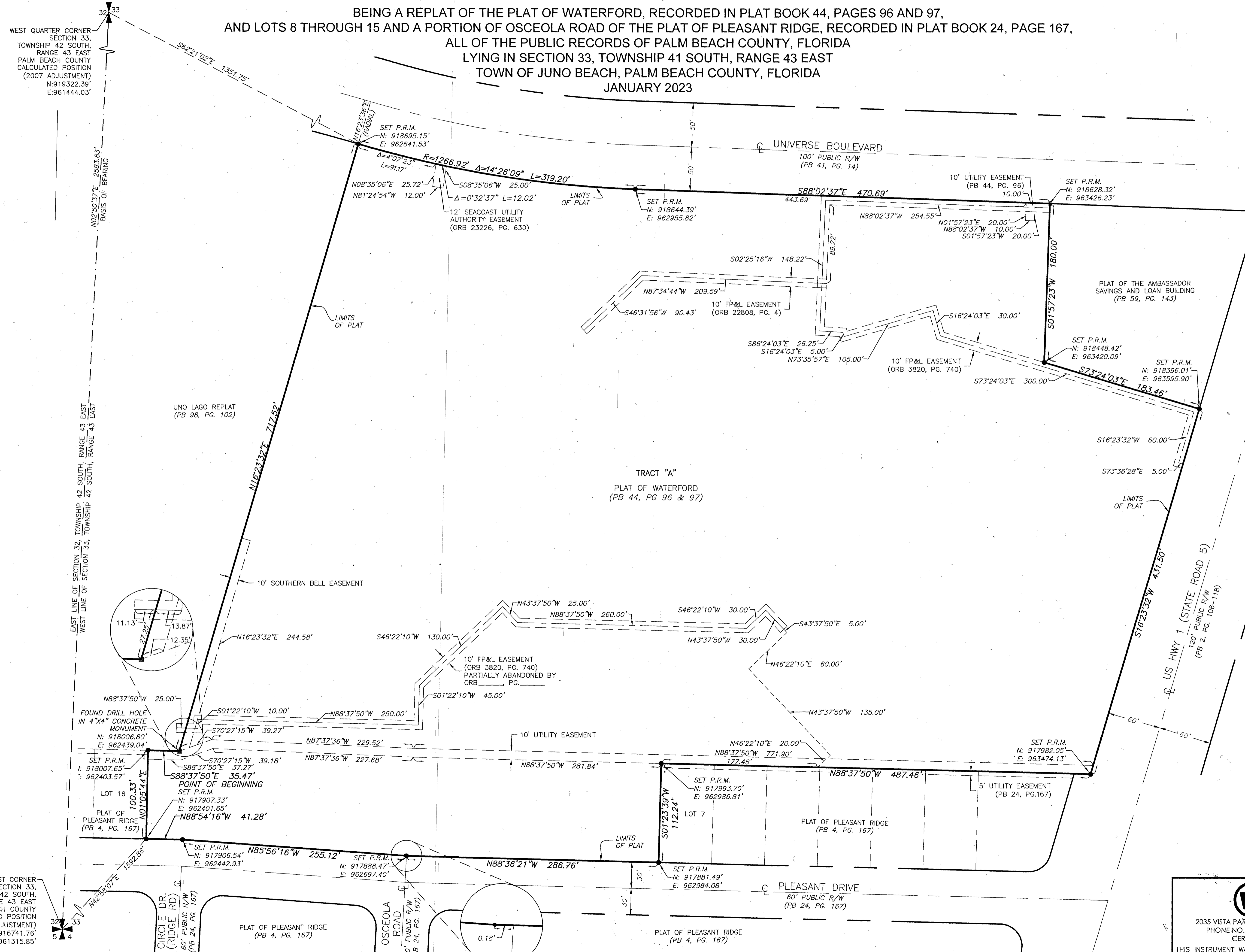
BEING A REPLAT OF THE PLAT OF WATERFORD, RECORDED IN PLAT BOOK 44, PAGES 96 AND 97,
AND LOTS 8 THROUGH 15 AND A PORTION OF OSCEOLA ROAD OF THE PLAT OF PLEASANT RIDGE, RECORDED IN PLAT BOOK 24, PAGE 167,
ALL OF THE PUBLIC RECORDS OF PALM BEACH COUNTY, FLORIDA
LYING IN SECTION 33, TOWNSHIP 41 SOUTH, RANGE 43 EAST
TOWN OF JUNO BEACH, PALM BEACH COUNTY, FLORIDA
JANUARY 2023

140

SHEET 2 OF 2



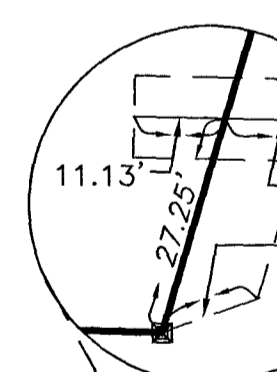
- LEGEND:
- ⊕ = CENTERLINE
 - Δ = DELTA (CENTRAL ANGLE)
 - = SET P.R.M. = SET 5/8" IRON ROD AND ALUMINUM DISK STAMPED "LB7055 PRM"
 - ⊙ = SET P.R.M. = SET NAIL & DISK STAMPED "PRM LB7055"
 - R = RADIUS
 - L = LENGTH
 - ORB = OFFICIAL RECORDS BOOK
 - NT = NON TANGENT
 - PC = POINT OF CURVATURE
 - PT = POINT OF TANGENCY
 - PB = PLAT BOOK
 - PG. = PAGE(S)
 - OS = OPEN SPACE



WEST QUARTER CORNER
SECTION 33,
TOWNSHIP 42 SOUTH,
RANGE 43 EAST
PALM BEACH COUNTY
CALCULATED POSITION
(2007 ADJUSTMENT)
N:919322.39'
E:961444.03'

N02°50'37"E 2952.63'
BASIS OF BEARING

EAST LINE OF SECTION 32, TOWNSHIP 42 SOUTH, RANGE 43 EAST
WEST LINE OF SECTION 33, TOWNSHIP 42 SOUTH, RANGE 43 EAST



FOUND DRILL HOLE
IN 4"x4" CONCRETE
MONUMENT
N: 918006.80'
E: 962439.04'

SET P.R.M.
N: 918007.65'
E: 962403.57'

POINT OF BEGINNING
SET P.R.M.
N: 917907.33'
E: 962401.65'

SOUTHWEST CORNER
SECTION 33,
TOWNSHIP 42 SOUTH,
RANGE 43 EAST
PALM BEACH COUNTY
CALCULATED POSITION
(2007 ADJUSTMENT)
N:916741.76'
E:961315.85'

CIRCLE DR.
(RIDGE RD)
60' PUBLIC R/W
(PB 24, PG. 167)

OSCEOLA
ROAD
60' PUBLIC R/W
(PB 24, PG. 167)

PLEASANT DRIVE
60' PUBLIC R/W
(PB 24, PG. 167)

WGI
2035 VISTA PARKWAY, WEST PALM BEACH, FL 33411
PHONE NO. 866.909.2220 www.wginc.com
CERT NO. 6091-LB NO. 7055
THIS INSTRUMENT WAS PREPARED BY ERIC MATTHEWS, P.S.M.
PROFESSIONAL SURVEYOR AND MAPPER, LICENSE NO. 6717
FOR THE FIRM: WGI, INC.